

# HEAD START AND EARLY HEAD START REPORT

Pacific Clinics' Head Start and Early Head Start programs provide comprehensive early childhood education for at-risk children ages birth to 5 and are free to families who qualify.

The programs, which are located in multiple sites including Altadena, Glendale, Los Angeles, Pasadena, Rosemead, and Sunland, served 768 children this past fiscal year.

Based on children's individual needs, the early education program is designed to improve their success at home and in school. With an emphasis on Science, Technology, Engineering and Mathematics (STEM), the program provides full- and part-day services; parent and prenatal education; health screenings; and connection to housing, food, clothing and other resources.

Pacific Clinics' birth to 5 therapists and specialists also work with early educators to ensure children receive behavioral health treatment if needed.

In addition to classroom education, our Early Head Start program offers home-based services for families with children ages birth to 3 and to expectant mothers. During these weekly visits an educator provides families support and resources and teaches parents about childhood development and their role as their child's first teacher.

We partner with local school districts, homeless shelters, health care providers, and day care centers to enhance our program's capabilities and meet the needs of the families we serve.

## HEAD START POLICY COUNCIL

**Chair:** Cindy Dardon **Vice Chair:** Mauli Bonner  
**Secretary:** Karen Preciado **Treasurer:** Rosa Perez

### Representatives:

Brooke Aguirre; Daisy Almario; Keith Buck; Eliana De la Torre; Lilit Grigoryan; Lila Gurguis; Sarineh Hovhannesian; Andreh Hovsepian; Lina Kazarova; Vartoush Khachoomian; Susan Mandel, PhD; Ermine Melik; Naira Mkhitaryan; Fe Palomique; Perdita Paria; Lusine Petrosya; Thalia Reyes; Tatiana Reyes; Anahi Rojas; Jason Schlatter; Aylin Soleymanian; Francisco Vargas; Anita Yarijanian; Mariana Yeghiazaryan

## FINANCIALS

### Funding Sources

Federal Funds	\$9,041,933
CA State Preschool Program	\$400,029
Child and Adult Care Food Program	\$308,485
<b>TOTAL FUNDING SOURCES</b>	<b>\$9,750,447</b>

### Expenditures

	Budget	Actual
Operations	\$9,318,037	\$9,305,526
Training	\$123,925	\$124,621
Food Services	\$308,485	\$308,485
<b>TOTAL PROGRAM COSTS</b>	<b>\$9,750,447</b>	<b>\$9,738,632</b>

## AUDIT STATEMENT

An independent third party external audit for Pacific Clinics' fiscal year ending June 30, 2018 found no deficiencies in our expenditures, or program operations compliance requirements as described in the Uniform Guidance.

## ENROLLMENT

768

Number of  
Children Served

686

Number of  
Families Served

85%

Average Daily  
Attendance  
*as a percentage of  
funded enrollment*

## MEDICAL AND DENTAL EXAMS



91%

Head Start Students  
Received Medical Exams

71%

Early Head Start  
and Child Care  
Partnership Students  
Received Medical Exams



88%

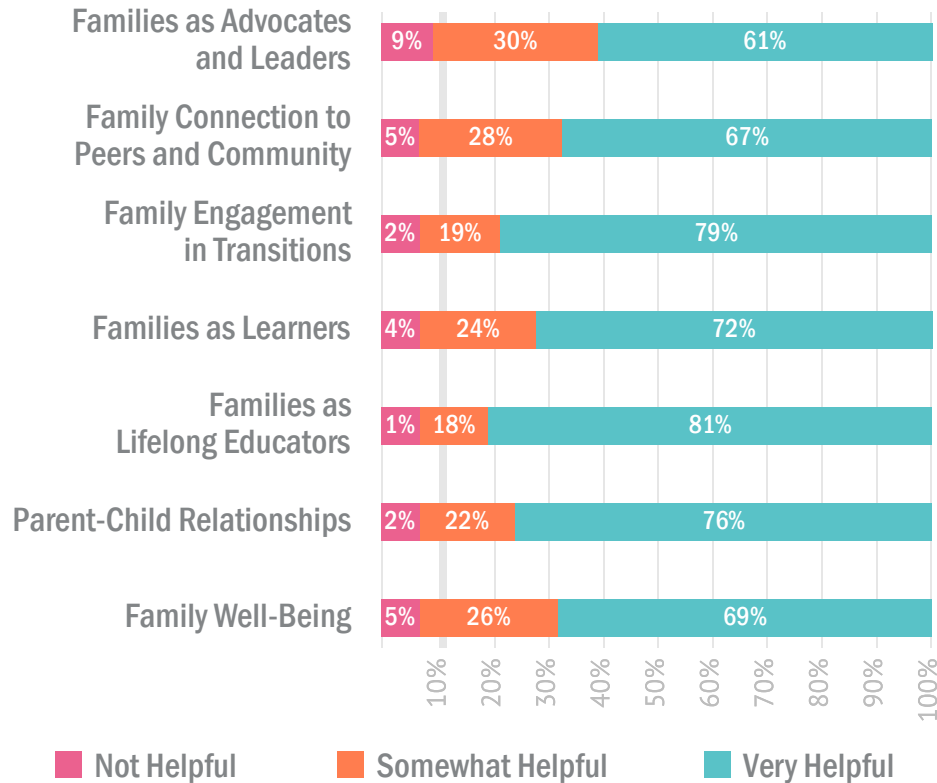
Head Start Students  
Received Dental Exams

55%

Early Head Start  
and Child Care  
Partnership Students  
Received Dental Exams

## Family Engagement Activity

### Results of Annual Family Outcomes Survey



Pacific Clinics' Head Start implements a family engagement approach to provide high-quality education and strengthen the household. Together, we develop personalized family partnership agreements and set goals to improve the parent-child relationship, community connections, and overall well-being of the family. These activities include participating in events such as career day and end-of-year transition to kindergarten, parental engagement, cooking classes and other workshops, in-home learning activities, and volunteering opportunities.

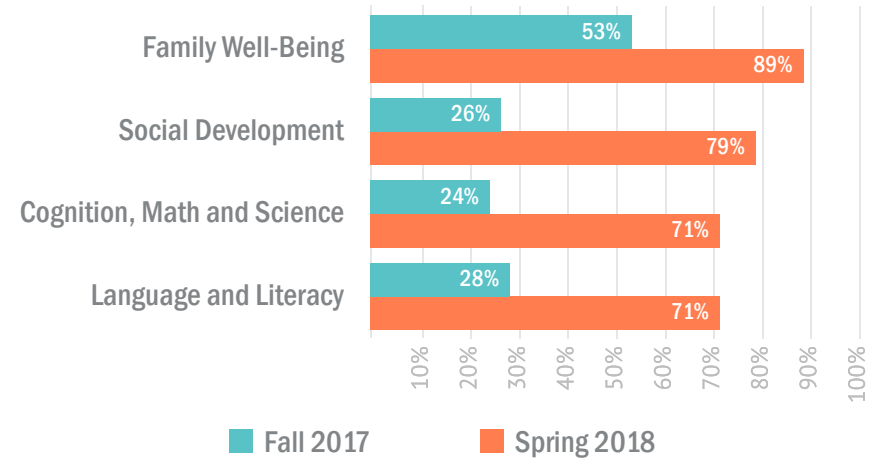
More than 480 parents completed Pacific Clinics' 2018 Annual Family Outcomes survey to gauge how well their needs were met through engagement activities. The chart above shows the results.

*The Pacific Clinics Head Start and Early Head Start program is required by the Head Start Act section 644(a)(2) to provide an annual report to the public consisting of the information provided.*

## Preparing Children for Kindergarten

### Results of Desired Results Developmental Profile

School Readiness for Children Entering Kindergarten in Fall 2018  
Comparison of Start of School Year (Fall 2017) vs. End of School Year (Spring 2018)



### Measuring Children's Development

Pacific Clinics uses the Desired Results Developmental Profile (DRDP-2015) to measure a child's developmental progress and is aligned with the California Department of Education Preschool and Infant Toddler Learning Foundations, research-based curricula (High Scope Preschool Curriculum, Creative Curriculum for Infants Toddlers & Twos, and Family Child Care Homes) and the Office of Head Start Early Learning Outcomes Framework.

During the 2017-2018 school year, outcomes data was collected, aggregated, and analyzed to record the progress of each child. Teachers and parents use the initial data to set learning goals for each child. Planned learning activities and lesson plans for children are developmentally, culturally and linguistically appropriate. The program's School Readiness Reports reflect the developmental progress children have made on average in each of the Head Start learning domains.

### Quality Rating and Improvement System (QRIS)

The Quality Start Los Angeles (QSLA) initiative sets standards for early education programs. Our program was evaluated by QSLA and received an excellent rating of 4 of 5 at each of our five child care sites.