



JUNE



Contact us to Register

New Students: Email ocrei@pacificclinics.org or call 714-244-4322 to schedule a new student appointment.

Current Students: Contact your Academic Advisor or a Success Coach to request registration assistance.



MONDAY	TUESDAY	WEDNESDAY	THURSDAY	FRIDAY
1	2  Digital SKILLS Lab 11:00a.m.-1:00p.m. ONLINE Study Hall 4:30p.m.-5:30p.m.	3  Jeopardy Trivia 11:30a.m.-12:30p.m.	4	5 PEER WORKFORCE EVENT! 9:00a.m.-2:00p.m.  Must RSVP
8  Coping Through Coloring: Summer Themed Coloring 11:00a.m.-12:30p.m. Intro to Outreach (CE) 12:30p.m.-2:30p.m. Self-Paced Story-Telling Assignment Study Hall 3:00p.m.-6:00p.m.	9 ONLINE Study Hall 4:30p.m.-5:30p.m.	10  2000 Steps Walking Club 11:00a.m.-12:00p.m.	11  Digital STORYTELLING w/ Google Docs 11:00a.m.-1:00p.m.	12  Digital VISION Board Creation 11:00p.m.-1:00p.m.
15 Medi-Cal Peer Support Specialist Exam Prep (Hybrid) 4:00p.m.-6:00p.m.	16 ONLINE Study Hall 4:30p.m.-5:30p.m.	17  Mindful Walking 11:00a.m.-12:00p.m.  Finding Calm in Turbulent Times 6:30p.m.-8:00p.m.	18  Creative CARD Making STUDIO 12:00p.m.-2:00p.m.	19 Navigating Dual Relationships as a Peer Professional (CE) (Online) 10:30a.m.-12:00p.m.  Chair Yoga 11:00a.m.-12:00p.m.
22 Workforce Readiness 1:30p.m.-3:00p.m.	23 ONLINE Study Hall 4:30p.m.-5:30p.m.	24  Arts & Empathy 10:30a.m.-12:00p.m. Reporting, Overpayment, & Housing (CE) 1:00p.m.-2:00p.m.	25  Affirmations & Art: SUMMER SOLSTICE 12:00p.m.-2:00p.m.	26  Conflict Resolution Skills 10:30a.m.-12:00p.m.
29	30 ONLINE Study Hall 4:30p.m.-5:30p.m.			

The Recovery Education Institute (REI) is an academic program for adults living with mental illness or live with family with a mental illness.



Funded by the OC Health Care Agency.



Workshop Descriptions



ONLINE Study Hall - Instructor: Christina Seraj 6/2,6/9,6/16, 6/23, 6/30
Success Coach Online Office Hours for supported academic guidance throughout the journey or your Human Services college coursework.

Digital SKILLS Lab - Instructor: Christina Seraj 6/2
This OPEN Style COMPUTER LAB provides individualized guidance based on each student's digital learning interests.

Jeopardy Trivia - Instructor: Tommy Tran 6/3
Quick thinking meets friendly collaboration! Participants will enjoy answering a variety of questions across diverse categories while sharpening their minds and having fun.

REI: PEER WORKFORCE EVENT - 6/5
This free event includes peer workforce workshops & panels, 2 CE hours for Certified Medi-Cal Peer Support Specialists, a behavioral health career fair, and lunch from TK Burgers; RSVP is required using the QR code on the Peer Workforce flyer or by calling Recovery Education Institute at 714-244-4322.

Coping Through Coloring: Summer Themed Coloring - Instructor: Destiny Lopez 6/8
Join this relaxing workshop to decompress through detailed coloring activities with provided coloring pages, markers, gel pens, and colored pencils.

Self-Paced Story-Telling Assignment - Instructor: Destiny Lopez 6/8
Join this workshop to get assistance with completing your Self-Paced Story-Telling Assignment for the Peer Support Specialist Training.

Intro to Outreach (CE) - Instructor: Michelle Tanner 6/8
This training covers the basics of street outreach, including safety, engagement, and client-centered support. Participants will learn how outreach connects people experiencing homelessness to essential services.

2000 Steps Walking Club - Instructor: Tommy Tran 6/10
Take the first step toward better health with our 2000 Steps Walking Club Workshop—walk your way to fitness and feel the difference!

Digital Storytelling W/Google Docs - Instructor: Christina Seraj 6/11
We will be strengthening our storytelling skills through this dynamic way of utilizing our Google Accounts.

Digital Vision Board Creation - Instructor: Christina Seraj 6/12
We will be creating Vision Boards in the computer lab to simultaneously advance our Computer & Creation expertise.

Medi-Cal Peer Support Specialist Exam Prep (Hybrid) - Instructor: Kevin Martin 6/15
Join our workshop to get the tips and materials you need to pass the Medi-Cal Peer Support Specialist Certification Exam.

Finding Calm in Turbulent Times - Instructor: Taro Thomas 6/17
In this workshop, participants will explore mindfulness-based tools to stay centered and resilient during stressful or uncertain times. Learn how to create moments of calm that support both personal and professional balance.

Mindful Walking - Instructor: Tommy Tran 6/17
Step into serenity with our mindful walking workshop—where each breath and step reconnects you to the present moment and the world around you.

Creative Card Making Studio - Instructor: Christina E. Seraj 6/18
We will be creating home-made cards in honor of Father's Day.

Navigating Dual Relationships as a Peer Professional (CE) - Instructor: B. Rastegar 6/19
Explore strategies for effectively managing dual relationships as a peer professional, balancing personal connections with ethical and professional boundaries.

Chair Yoga - Instructor: Tommy Tran 6/19
Experience the benefits of gentle movement and relaxation in our Chair Yoga workshop, designed for all ages and abilities.

Workforce Readiness - Instructor: Ally Gandullia 6/22
This workshop builds essential workplace skills, including communication, teamwork, time management, and professionalism.

Reporting, Overpayment, & Housing (CE) - Instructor: Dung Le 6/24
How to report while working. Discussion about causes of overpayments and solution to overpayment. Discussion about housing.

Arts & Empathy - Instructor: Tommy Tran 6/24
Through creative expression and community support, attendees will deepen their healing journey in a safe and nurturing space for emotional processing and connection.

Affirmations & Art: Summer Solstice Ed. - Instructor: Christina E. Seraj 6/25
We will be creating BUCKETLISTS with positivity & creativity, along with a lite celebration of Summer Solstice, the beginning of SUMMER Vibes.

Conflict Resolution Skills - Instructor: Tommy Tran 6/26
Boost your communication confidence with a dynamic, hands-on workshop that turns everyday conflicts into opportunities for collaboration and growth.





REI'S 4TH ANNUAL PEER WORKFORCE EVENT

The Future is Peer-Powered: Opportunities in an Expanding Workforce

**FREE LUNCH
PROVIDED!**



**5 JUNE
2026**

401 S Tustin Street

**LEARN ABOUT
NEW CAREER
PATHWAYS IN
BEHAVIORAL
HEALTH CARE!**



9:00AM - 2:00PM

**BEHAVIORAL HEALTH
CAREER FAIR**



**RSVP! Register using the QR code
by Wednesday, June 3rd.**

Front Desk: 714-244-4322

Website: pcrei.org

Alcohol Drug Studies & Mental Health Worker Education Pathways REGISTRATION IS OPEN!

Seats are limited & not guaranteed. REI's certificate enrollment process is lengthy & time-sensitive!

ALL REQUIRED APPOINTMENTS, APPLICATIONS, & MATRICULATION STEPS MUST BE COMPLETED BEFORE JULY 17TH TO BE ELIGIBLE FOR FALL 2026.



NO-COST COLLEGE CERTIFICATE CLASSES @ REI:

REI, in partnership with Saddleback College, offers free Human Services certificates for eligible OC residents. Students attend classes through REI while dual-enrolled at Saddleback College. Courses may apply toward **Alcohol & Drug Studies, Mental Health Worker, or Human Services Generalist tracks & qualify for Peer Support Specialist CE hours.**

HOW TO ENROLL:

NEW STUDENTS

1. Schedule and complete a 1-hour New Student Enrollment with an REI Academic Advisor
2. Complete a Saddleback College application appointment with your Academic Advisor
3. Finish all Saddleback Matriculation Steps
4. Complete an REI Program Interview & Orientation

CURRENT STUDENTS

- Contact your Academic Advisor to express interest, schedule an appointment, and begin eligibility steps today.

FALL COURSES 2026

HS 100 – INTRODUCTION TO HUMAN SERVICES

Dates: 8/17/2026 to 10/11/2026

Days: Tuesdays

Hours: 6:00 pm – 8:50 pm

Modality: Online Live-Stream

HS 101 – ADDICTION STUDIES COUNSELING SKILLS

Dates: 10/19/2026 to 12/16/2026

Days: Wednesdays

Hours: 6:00 pm – 8:50 pm

Modality: Online Live-Stream + 3 on campus meetings @ Saddleback on 10/29, 11/05, & 12/03

HS 172 – PHYSIOLOGICAL EFFECTS & PHARMACOLOGY OF ALCOHOL & DRUGS

Dates: 8/17/2026 to 10/11/2026

Days & Hours: Weekly assignments & deadlines

Modality: Online (no class meetings)

Visit Our Website
www.PCREI.org

(714) 244-4322

APPLY NOW



FALL 2026

REGISTRATION IS OPEN!

Social Work & Human Services Education Pathway

SANTIAGO CANYON COLLEGE (SCC) @ REI

Dual Enrollment Partnership

- Help others. Build your future. Earn SCC's 19-unit Social Work & Human Services Assistant (SWHSA) Certificate at REI campus
- Strong focus on workforce readiness
- Volunteer work, internships, and/or work hours at behavioral health sites may count toward program-related experience
- First step toward an Associates or A.D.T. degree through SCC*

To Be Eligible for Fall 2026

Students must complete ALL steps by the Fall deadline:

- Meet with an REI Academic Advisor (AA)
- Apply to SCC with Advisor's guidance
- Complete all REI & SCC enrollment and matriculation steps
- New REI SCC students must attend REI's SCC Orientation

Apply early. Fall 2026 enrollment is limited and missing deadlines may make you ineligible.

Program Courses (19 Units)

- CNSL 150 – Intro to Social Work & Human Services (3)
- CNSL 151 – Helping Professions Employability Skills (1)
- CNSL 161* – Work Experience Education (1–3)
- CNSL 160A – Helping Professions Seminar (1)
- CNSL 160B – Fieldwork Experience (2)
- CNSL 165 – Multiculturalism in Counseling (3)
- PSYC 1000 – Intro to Psychology (3)
- SOC 100 – Intro to Sociology (3)
- *Additional elective required if fewer than 3 units completed in CNSL 161.

**Limited SCC courses available @ REI each semester. Additional A.S. coursework may be completed independently through SCC.*

For more information or to schedule an advisement session, contact:

☎ 714-244-4322 | ✉ ocrei@pacificclinics.org

The Recovery Education Institute (REI) is an academic program for adults living with mental illness or live with family with a mental illness.

ESL BEGINNING & INTERMEDIATE LEVEL

June 1 - July 30 | Mon. - Thurs. | 9 a.m. - 12 p.m.

This weekly ONLINE class provides instruction for students in various levels of beginning English proficiency. Emphasizes speaking, listening, reading, and writing English in familiar contexts. / Provee instrucción para estudiantes en varios niveles de inglés. Enfatiza hablar, escuchar, leer, y escribir en inglés en contextos familiares.

HIGH SCHOOL EQUIVALENCY TEST PREP (HISET/GED)

June 2 - July 30 | Tues. & Thurs. | 4 p.m. - 6:30 p.m.

This weekly in-person class helps students prepare for the High School Equivalency (HSE) or GED exam. Build skills in math, reading, writing, social studies, and science with guided instruction, practice tests, and support.

SPANISH LANGUAGE INSTRUCTION

June 2 - July 28 | Tues. | 4:30 p.m. - 6:30 p.m.

This weekly in-person class further develops the student's control of the Spanish language through listening, speaking, reading, and writing activities with emphasis being placed upon listening and speaking. Develops the student's knowledge of cultural topics.

COMPUTER APPLICATION BASICS

June 3 - July 29 | Wed. | 4:30 p.m. - 7:30 p.m.

This weekly in-person class introduces the essentials of industry-standard computer applications. Learn the basics of word processing, spreadsheets, databases, presentations, internet use, and simple graphics through hands-on instruction, perfect for beginners or anyone refreshing their skills. (Note: no class on June 17 & June 24)

SUMMER 2026

REI's SCC Extended Education (EE) Courses

Contact us to register today!

All EE classes are Open entry/Open exit, join any time!

Phone: 714-244-4322

Email: ocrei@pacificclinics.org

CREATIVE WRITING

June 4 - July 30 | Thurs. | 10 a.m. - 12 p.m.

This weekly in-person class invites you to dive into the world of words in our dynamic Creative Writing Workshop. Whether you're an aspiring novelist, poet, or simply love language, explore and grow your writing skills in a vibrant, supportive space.

STUDIO ART

June 12 - July 31 | Fri. | 1 p.m. - 3 p.m.

This weekly in-person class invites adults of all skill levels to explore their creativity in a hands-on studio art course. Learn drawing, painting, and mixed media techniques while building skills, expressing yourself, and creating original works in a supportive environment.



The Recovery Education Institute (REI) is an academic program for adults living with mental illness or live with family with a mental illness.



Funded by the OC Health Care Agency.



Recovery Education Institute

College Courses & Certifications

Medi-Cal Peer Support Specialist Certification Training

Recovery Education Institute (REI) offers an 80 hour online Medi-Cal Peer Support Specialist Certification training that equips aspiring peer support specialists in learning skills based content while utilizing their lived experiences to gain pcrei.org employment within the mental health services field.

Human Services: Mental Health Worker and Alcohol Drug Studies Certificates

Through our partnership with Saddleback College, we offer certification programs for students who wish to receive a Mental Health Worker certificate (29 units) or an Alcohol and Drug Studies (40 units) certificate and work with individuals living with mental health or alcohol and drug addictions and families of chemically dependent persons. Students complete their certificates at REI and are dual-enrolled at Saddleback College. Class units are transferable.

NEW! Social Work & Human Services Education Pathway

REI students can earn a Certificate of Achievement in Social Work & Human Services Assistant (SWHSA) through Santiago Canyon College (SCC). This 19-unit dual enrollment program offers college-credit courses on-site at REI, includes guided academic support from REI staff, aligns with the Medi-Cal Peer Support Specialist Certification pathway, and prepares students for entry-level careers in behavioral health, peer support, and community social services, with coursework that can lead toward an A.S. or A.D.T. degree in Social Work & Human Services.

New Students: Call (714) 244-4322 or email us at ocrei@pacificclinics.org to schedule an appointment



All courses and enrichment workshops are offered at NO COST to eligible adults living in Orange County.

OUR YEAR-ROUND CLASS SCHEDULE

To register in these popular programs, we advise that you meet with your Academic Advisor several months before a class begins in order to start the steps to enroll in our College Certifications or Peer Support Specialist Trainings.

Classes may be in-person or online, depending on the cohort schedule.

Seats go fast! Please call for details.

MEDI-CAL PEER SUPPORT SPECIALIST (PSS) CERTIFICATION TRAININGS

PSS is a two-month-long training that typically occurs three days a week, three hours per class.

REI's PSS trainings are offered four times every year: fall, winter, spring & summer.

MENTAL HEALTH WORKER (MHW), ALCOHOL DRUG STUDIES (ADS) & SOCIAL WORK (SW) CERTIFICATES

REI's College Semester Dates:

FALL: August - December

SPRING: January - May

SUMMER: June - July

REI REWARDS CARDS



BE AWARDED FOR ATTENDING QUALIFYING* REI WORKSHOPS!

Attend **2** Qualifying Classes =
ACTIVITY SWAG BAG



Attend **5** Qualifying Classes =
\$10 GIFT CARD



Attend **10** Qualifying Classes =
\$20 GIFT CARD



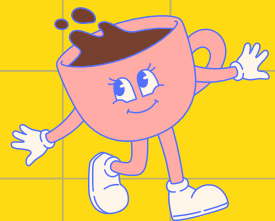
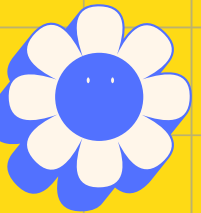
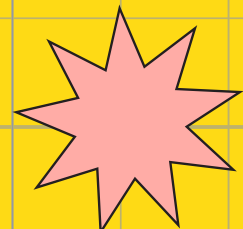
CONTACT YOUR SUCCESS COACH TODAY!

Tommy Tran 626-753-8716

Destiny Lopez 626-842-7548

Christina Seraj 626-753-8638

Rewards redemption is limited to two completed cards per student per fiscal year (July-June)



The Recovery Education Institute (REI) is an academic program for adults living with mental illness or live with family with a mental illness.



Funded by the OC Health Care Agency.